



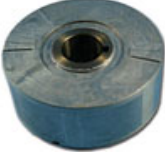






# MotoComp

Motorcycle Parts & Accessories

mcomp@mweb.co.za  
www.motocomp.co.za

073 750 9697

po box 59 pennington 4184  
fax 086 684 1544

Part No		Make	Model
RO3		Kawasaki	EN450, EN500ER5, GPZ500, GPZ1100, Z1000J
RO5		Kawasaki	Kawasaki: KLE500
RO6		Various	Replacement for Lucas generators commonly fitted to British motorcycles
RO9		Honda	CB650/750, CB900C/F/F2
RO20		Various	Rotor - Husq 410/610, Vor, Beta, Gas Gas
			NB This is a replacement for the Ducati Energia part ONLY
RO35		Kawasaki	Weighted Rotor (= 310g) KXF450
RO41		Yamaha	Standard Rotor YZ250(2000 on)
RO41-W6		Yamaha	Weighted Rotor (+170g) YZ250 (2000 on)
RO50		Honda	Standard Rotor - CRF250/CRF450 (2002 on)

RO50-W13



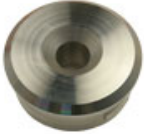
Honda Weighted Rotor (+400g) CRF250 CRF450 (2002 on)

RO49



KTM SXF models

RO49 W5



KTM SXF models - extra weighted

RO52



Honda Honda CRF250 (04-05)

R58



Yamaha Standard Rotor - YZF450 (2006)

R58-W5



Yamaha Weighted Rotor (+155g) YZF450 (2006)

RO58-W10



Yamaha Weighted Rotor (+310g) YZF450 (2006)

RO70



Yamaha Standard Rotor - YZF250 (2003 on) YZF450 (2002 -2005)

RO70-W6



Yamaha Standard Rotor - Yamaha YZF250 (03 on)

RO89



Honda Honda CBR900RR (00-01)

**RO80**



**HD** | Big Twin motorcycles

**RO92**



**Ducati** | Models that use G92 type stator

**RO93**



**Ducati** | Models that use G93 type stator

**RO99**



**Kawasaki** | Kawasaki Z1/Z900

**RO145**



**KTM** | 4-stroke KTM EXC models

**RO 660**



**Triumph** | RO660-G660